

DELUXE RAPID INFINITY 6 PERSON DOUBLE SIDED WORKSTATION - WITH SCREENS - 1500MM W X 750MM D SCALLOP WORKTOPS

Deluxe Rapid Infinity 6 Person Double Sided Workstation - With Screen
Worksurface With 410mm W x 50mm D
Scalloped Cable Access
4500mm W x 1530mm D x 1200mm H
(Overall), 1500mm W x 750mm D x 730mm
H (Per User), 60mm x 30mm Profile Leg
Underframe
495mm H x 30mm T Pinnable Privacy Screen
Upholstered In Fabric

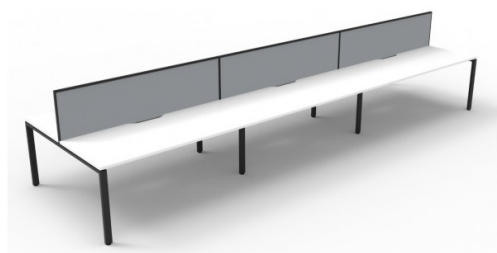
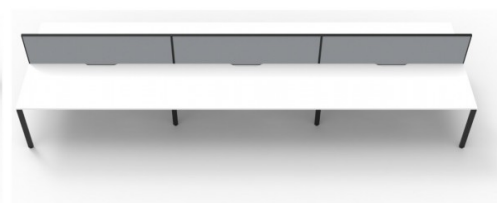
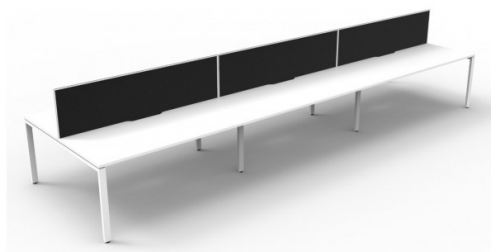
SKU: D-IPLDWS6P1575

VARIATIONS

Image	SKU	Price	Description	Leg colour	Top colour	Screen colour
	D-IPLDWS6P1575			Black	Oak	Black Fabric with White Frame

Image	SKU	Price Description	Leg colour	Top colour	Screen colour
	D-IPLDWS6P1575 NO/WS		White	Oak	Black Fabric with White Frame
	D-IPLDWS6P1575		White	Oak	Grey Fabric with Black Frame
	D-IPLDWS6P1575 NW/WS		White	White	Black Fabric with White Frame
	D-IPLDWS6P1575		White	White	Grey Fabric with Black Frame

GALLERY IMAGES



PRODUCT DESCRIPTION

Maximise space and create an efficient working environment with Deluxe Rapid Infinity. 750mm deep Enviroboard tops, with scallop for cable access, and a recessed leg to create full leg access in long runs of workstations.

The 60 x 30 profile leg adds a minimalist look to each workstation run, and the matching dividing screen adds privacy and noise reduction to each workstation.

White or oak tops, and black or white frames create a modern, clean look to your fit out.

Finishes:



Product Features

- Deluxe Infinity with Deeper 750mm Top
- Scalloped top for easy wire management
- Recessed Intermediate Leg Creates Full Leg Access
- 60 x 30 Profile End Leg
- Double Support Rail for Extra Strength
- E1 Enviroboard
- Natural Oak/Black, Natural Oak/White
- Natural White/Black, Natural White/White
- 5 Year Warranty

Specifications

- D-IPLD2P1875: 1800mm (W) x 1530mm (D) x 730mm (H)
- D-IPLD2P1575: 1500mm (W) x 1530mm (D) x 730mm (H)
- D-IPLD2P1275: 1200mm (W) x 1530mm (D) x 730mm (H)



Q Office Furniture
02 63 62 3530
enquiries@qof.com.au
www.qof.com.au